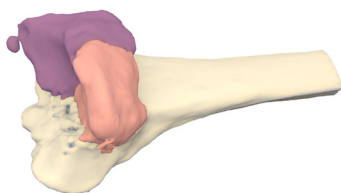


Perforation osteotomies

1 Ensure good guide exposure

! Before the incision is made, verify that the guides match the patient and the case report by checking the unique ID on the tag. Once the ID is verified, the tag can be broken off and discarded.

After the incision is made, remove as much soft tissue around the fitting area of the bony anatomy as needed to allow for good exposure and optimal positioning of the guides.



2 Position drill guide(s)

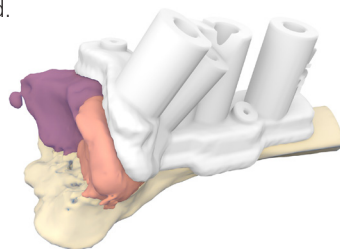
Position the drill guide¹ on the bone by comparing its position with the guide outline on the bone model. Make sure there are no gaps and there is no soft tissue trapped underneath the guide.

Affix the drill guide firmly onto the bone using K-wires².

Drill through the guide's drill sleeves using metal guides² and drill bits².

Insert the metal guides² as far as possible into the drill sleeves³.

If you have received more than one drill guide¹, move to step 3 and then repeat step 2 until all drill guides have been used.

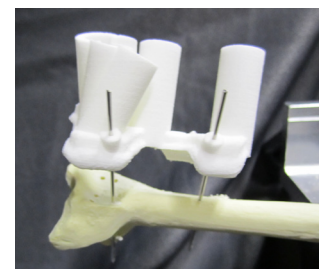


3 Exchange guides

Remove all K-wires² except the pin(s) indicated in your case report.

Slide the guide off the bone over the remaining K-wire(s).

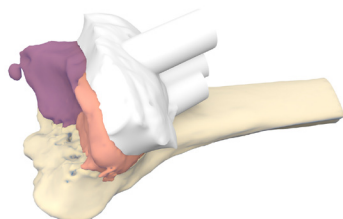
Slide the next guide¹ over the same K-wire(s) onto the bone.



4 Position perforation guide(s)

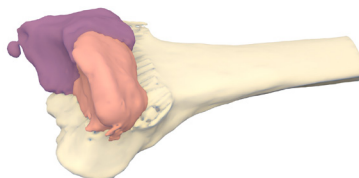
Affix the perforation guide¹ firmly onto the bone by inserting K-wire(s)² into the open K-wire hole(s).

Use perforation guides the same way you use drill guides.



5 Remove perforation guide

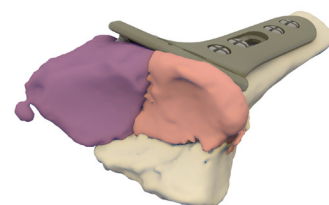
Remove all K-wires and remove the guide from the bone.



6 Affix plate

Refer to the surgical technique of the implant in order to determine the fixation of the implant.

Use the pre-drilled screw holes (see step 2) to affix the plate.



¹ All guides are numbered. Materialise cannot guarantee a successful surgery if the guides are not used in the correct order mentioned in the case report.

² Use only the instruments that are defined in your case report.

³ If you're using drill guides with safety stop, make sure that you insert the drill bit into the drill sleeve as far as possible.

Materialise is the manufacturer of patient-specific SurgiCase Guides, does not practice medicine and does not recommend this technique or device.

Each surgeon takes full responsibility for using SurgiCase Guides and the described technique intra-operatively.

SurgiCase and Materialise are registered trademarks owned by Materialise, registered in the United States and other countries.

For more information:

ortho@materialise.com – ortho.materialise.com +32 16 396666

Materialise
innovators you can count on